

Wheel Features

Tread Material:	High Temperature Nylon	Core Material:	High Temperature Nylon
Bearing:	Ball Bearing	Tread Hardness:	75D±3
Temperature:	-25°C~280°C	Running Speed:	4km/h

Note: Use beyond temperature range or beyond the recommended speed may shorten product life or even damage the product.



- ✔ Precision high temperature bearing, high temperature resistance, flexible rotation
- ✔ Enhanced injection nylon, high temperature endurable, wear resistance
- ✔ No deformation, anti-aging, endurable to humid environment
- ⚠ Hard wheel material, it may damage epoxy flooring
- ⚠ Wheel running may cause some noise

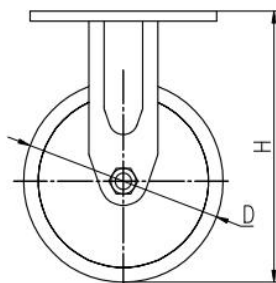
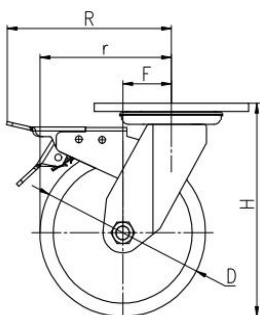


Rolling resistance	■ ■ ■ ■ ■	Excellent
Wear resistance	■ ■ ■ ■ ■	Excellent
Operating noise	■ ■ □ □ □	Acceptable
Floor surface preservation	■ ■ □ □ □	Acceptable

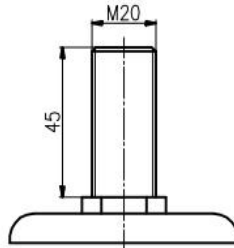
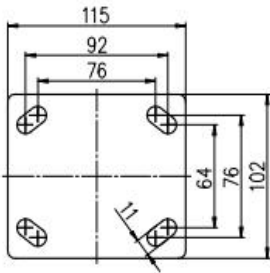
Bracket Features

- ✔ Steel plate pressed and fully welded, firm and strong
- ✔ Top plate and ball tracks are quenched to enhance strength and prolong service life
- ✔ Reinforced riveted, close gap, high structural strength
- ✔ Blue galvanized, ROHS/REACH passed, salt spray test over 72 hours
- ✔ ON/OFF pedals, stable braking effect, easy to operate
- ✔ Brake part is replaceable, convenient to maintain

Parameter (mm)	Capacity	Wheel Dia.	Wheel Width	Total Height	Offset	Swivel Radius	Swivel Radius
4"	300 kg	100	44	145	34	84	148
5"	350 kg	125	44	165	38	101	151
6"	400 kg	150	44	190	44	119	154
8"	430 kg	200	44	240	54	154	173



Mounting Drawing



Product ID					
Product Images					
Wheel Size	Plate swivel	Plate fixed	Plate swivel brake	Threaded stem	Threaded stem brake
4"	35A60-1669	35A62-1669	35A61-1669	35A95-1669	35A96-1669
5"	35A63-1670	35A65-1670	35A64-1670	35A97-1670	35A94-1670
6"	35A66-1671	35A68-1671	35A67-1671	35A93-1671	35A98-1671
8"	35A69-1672	35A71-1672	35A70-1672	35A99-1672	35AA1-1672

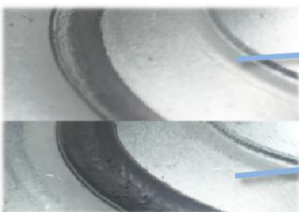
Product Details



Grease nipple is convenient for maintenance. Fancy riveted structure with gap tightly.



ON/OFF brake is easy to operate. Brake components can be replaced with screw connecting.



Quenched Ball Track has slight abrasion.

Non-quenched Ball Track' s abrasion and gap clearly.

Comparison after 10000times Rotational test.

